

www.lqg.com.pe T: (51-1) 628-1502  
Av. Benavides 1555, Of. 801, Miraflores



**LQG**

Energy & Mining Consulting  
LAUB | QUIJANDRIA | GOMERO

# Beyond Consulting **Game Changing** Partners



---

2006  
OUR FOUNDING PARTNERS



**Carlos Gomero | Anthony Laub**

After realizing that the sector needed something different, we decided to combine the best of both worlds: law firms and consultants. With this goal in mind, we assembled the best staff of lawyers, engineers, and economists to create a multidisciplinary consulting platform with experience in the development of major energy and mining projects, extensive technical knowhow, and a solid moral foundation.



OUR LEGACY

**Jaime Quijandría Salmón  
(1943 - 2013)**

Jaime was a tireless promoter of energy, mining, and economic development in our country and a partner at our firm. His commitment to Peru and his intelligent and discreet approach were always evident in the way he conducted himself throughout his life. Today, we would like to express our gratitude by reaffirming our commitment to follow his invaluable example.

The only **multidisciplinary consulting** firm specializing in the energy and mining sectors

**Mission**

We are the first and only energy, mining, and infrastructure consulting firm with a highly specialized, multidisciplinary team, experts in both the public and private sectors who offer strategic, comprehensive, and innovative services and solutions for the development of projects and business ventures in Peru.

**Vision**

To be a benchmark consulting firm for all of Latin America, specializing in energy and mining.



---

# OUR PURPOSE

More than consultants, **we are game-changing partners** and drivers of transformation.

## **We Are More Than Consultants**

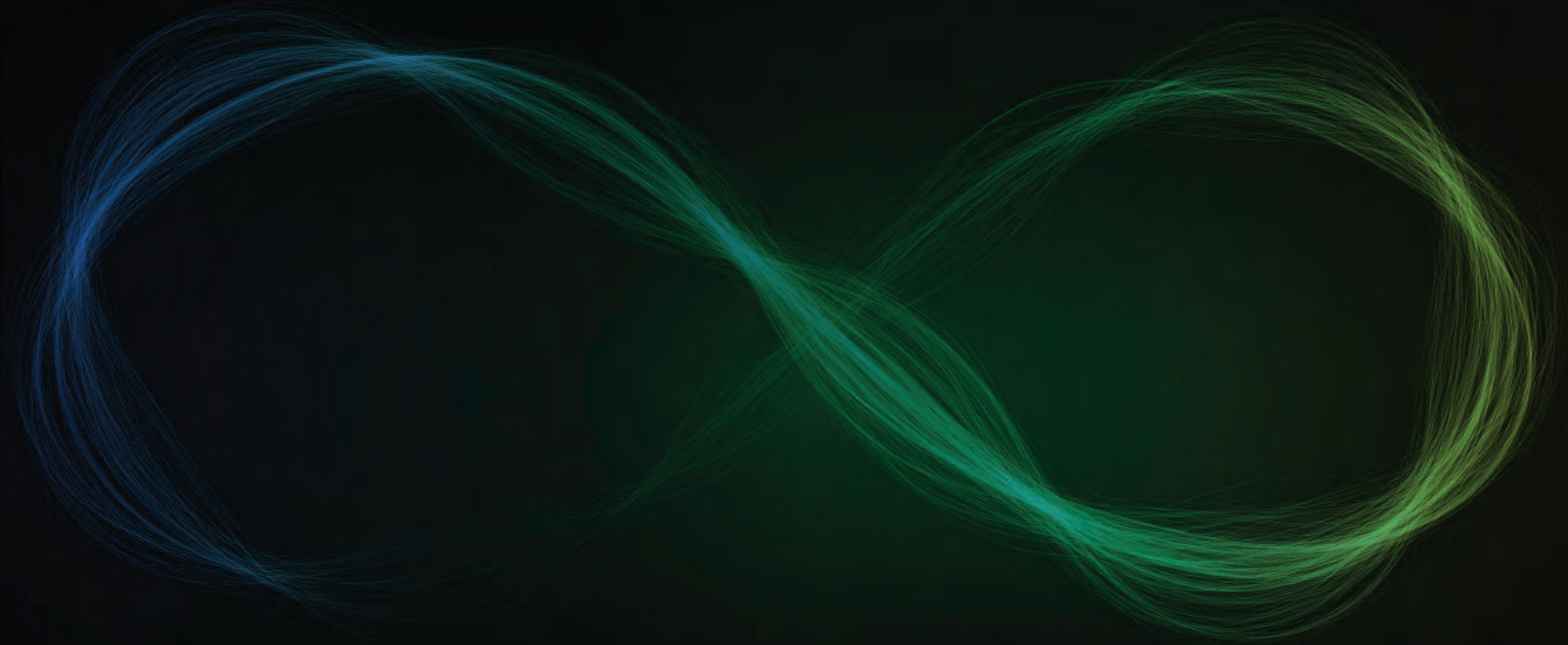
More than a traditional law or consulting firm, **we provide strategic, comprehensive advice** based on our multidisciplinary experience in the energy and mining sectors in both the public and private spheres.

## **We are Game Changers**

**We simplify complexity and drive transformation** in the search of significant results, designing implementation strategies based on a 360° perspective that combines legal, commercial, regulatory, and technical aspects to ensure our clients adapt and succeed in the market.

## **Strategic Partners**

We are highly focused on building **long-term relationships** to achieve significant and sustainable improvements in each one of the projects we take on. We foster relationships based on **knowledge, trust, ethics, and personalized service.**





Anthony Laub  
Carlos Gomero  
Ricardo Labo  
Gabriel Doig  
Titto Almora  
Gonzalo Blanco  
David Vilca



---

## OUR PARTNERS

**A mix of talents that provides  
a 360° perspective.**



---

## OUR TEAM

**Over 70 professionals with multidisciplinary  
experience**

Attorneys  
Architects  
Biologists  
Economists  
Geographers  
Environmental and Natural Resource Engineers  
Economic Engineers  
Electrical Engineers  
Geographic Engineers  
Forest Engineers  
Mechanical Engineers  
Petrochemical Engineers  
Psychologists  
Sociologists





# 360° MULTIDISCIPLINARY CONSULTING PLATFORM

To meet all the **needs** of the energy, mining, and infrastructure sectors



- Value Protection
- Efficiency Initiatives
- Investment Acceleration





# STRATEGIC FINANCIAL

Our multidisciplinary vision allows us to identify the main factors behind the development of business deals and projects to find the most efficient way to achieve the highest profit.

## Services

- Investment banking
- Added value for companies
- Investment strategies



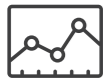
# PROJECT DEVELOPMENT

Our multidisciplinary team ensures that each project's execution is viable, from the design of the strategy and obtaining the required permits to the start of commercial operations, while optimizing time and costs.

## Services

- Risk analysis
- Technical and economic studies
- Private initiatives and the "works for taxes" regime
- Permits and authorizations
- EPC and supply agreements for goods and services





# TECHNICAL CONSULTANCY

We turn the energy and mining sector challenges into opportunities, providing support for projects in development and existing ventures, while streamlining their operation thanks to our technical specialization. en el sector energético minero.

## Services

- Price studies
- Technical due diligence
- Transmission planning
- Energy price forecasts
- Electrical studies for pre-operation and operation



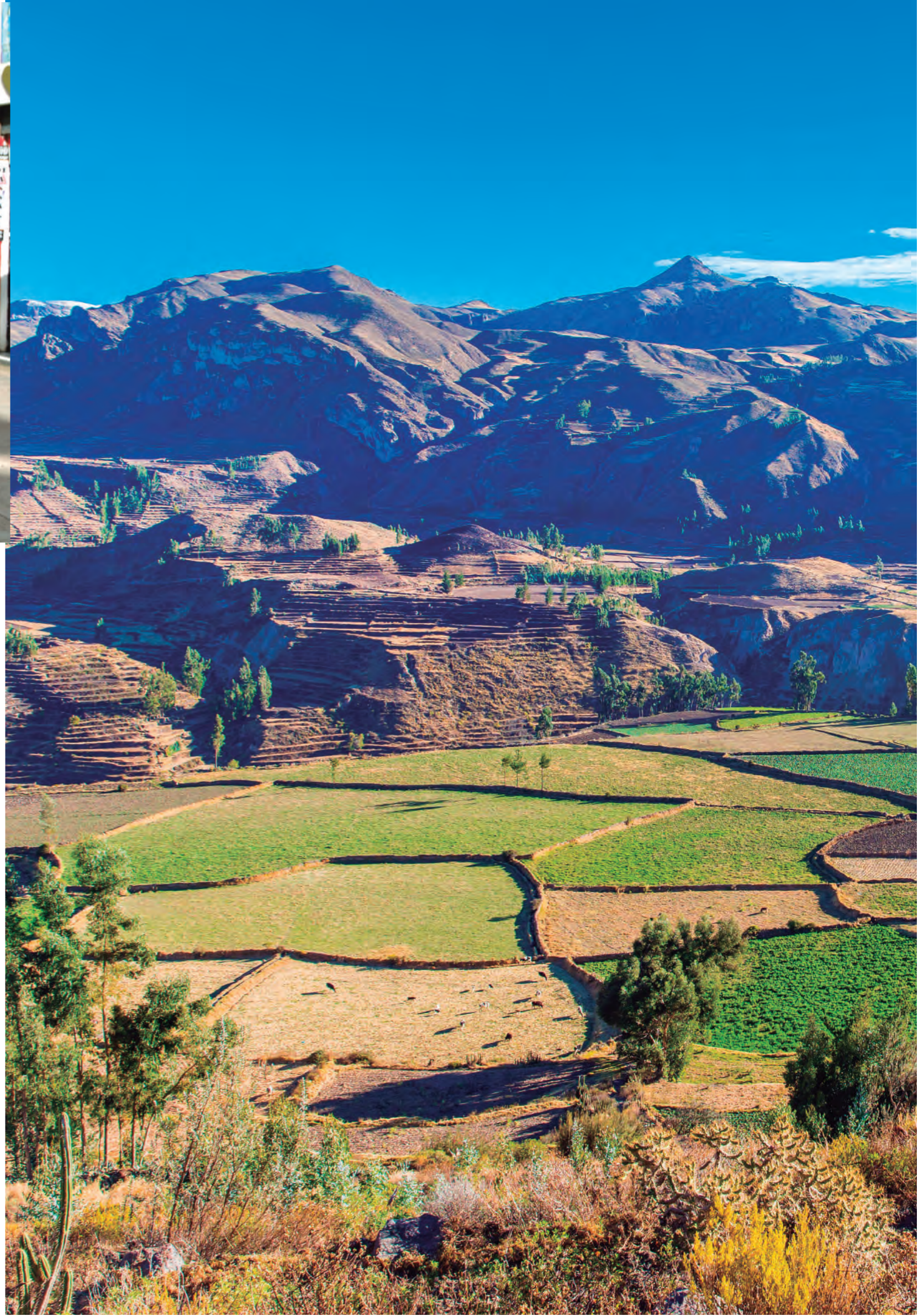
# LEGAL, REGULATORY AND COMMERCIAL ADVICE

We identify the risks faced by energy and mining businesses, providing legal, commercial, and regulatory solutions that foster their development and sustainability.

## Services

- Legal and regulatory advice
- Administrative procedures and arbitrations
- Energy contracting strategies
- Energy commercialization
- Price forecasts and market researches
- Commercial audits





# PROPERTY AND SOCIAL MANAGEMENT

We monitor the social environment and maintain harmonious relations with project stakeholders, guaranteeing the procurement of the surface rights required to foster long-term relationships.

## Property Management Service

- Studies on property deeds and other rights
- Identification of landowners and landholders
- Asset inventory and property appraisals
- Negotiation and release of lands
- Physical and legal disencumbrance of properties
- Urban development projects and municipal licenses
- Topographic surveying
- Boundary marking

## Social Management Services

- Stakeholder identification and analysis
- Social baseline
- Social risk analysis
- Community relations





# ENVIRONMENTAL MANAGEMENT

We make sure projects have the environmental support needed to guarantee their viability and sustainability.

We are authorized by the following entities to prepare environmental management instruments and offer environmental consulting services:

Ministries and/or Sectors: MTC, MVCS, SENACE, MINAGRI, PRODUCE, MINEM and MINCETUR

Our quality management system is ISO 9001 – 2015 certified

## Services

- Environmental management instruments
- Due diligence
- Environmental, biological, social, and occupational monitoring
- Comprehensive solid waste management and wastewater, gas, and particulate treatment
- Archaeological assessments (CIRAs, PMAs, PRA)
- Hydrological studies
- Modeling of emissions and effluents
- Development of remediation and stabilization programs for closure plans
- Action plans in case of environmental contingencies
- Environmental and ecosystem compensation plans
- Legal environmental advisory services; representation in environmental evaluation procedures and sanctioning administrative proceedings
- Mine closure plan
- Permits for research and gathering of forest resources, wildlife, and hydrobiological resources
- Environmental permits and authorizations: clearcutting, dumping, water use, haul material, etc.
- Environmental, regulatory, and occupational health and safety training





# LQG INTELLIGENCE

**High-level**  
information and  
analysis that adds  
value for better  
decision-making.



## **LQG Intelligence**

The risks and opportunities that companies face require well-informed executives who are prepared to make decisions, minimize risks, implement strategies, solve problems, and make wise investments.

**LQG Intelligence is a unique initiative that provides executive analysis and education services related to the energy and mining sectors in Peru.**

## **Analysis**

We offer an analysis and information service focused on knowledge and research.

## **Education**

We provide more tools for understanding the energy and mining sectors, with an emphasis on those aspects with the greatest influence on strategic decision-making.





